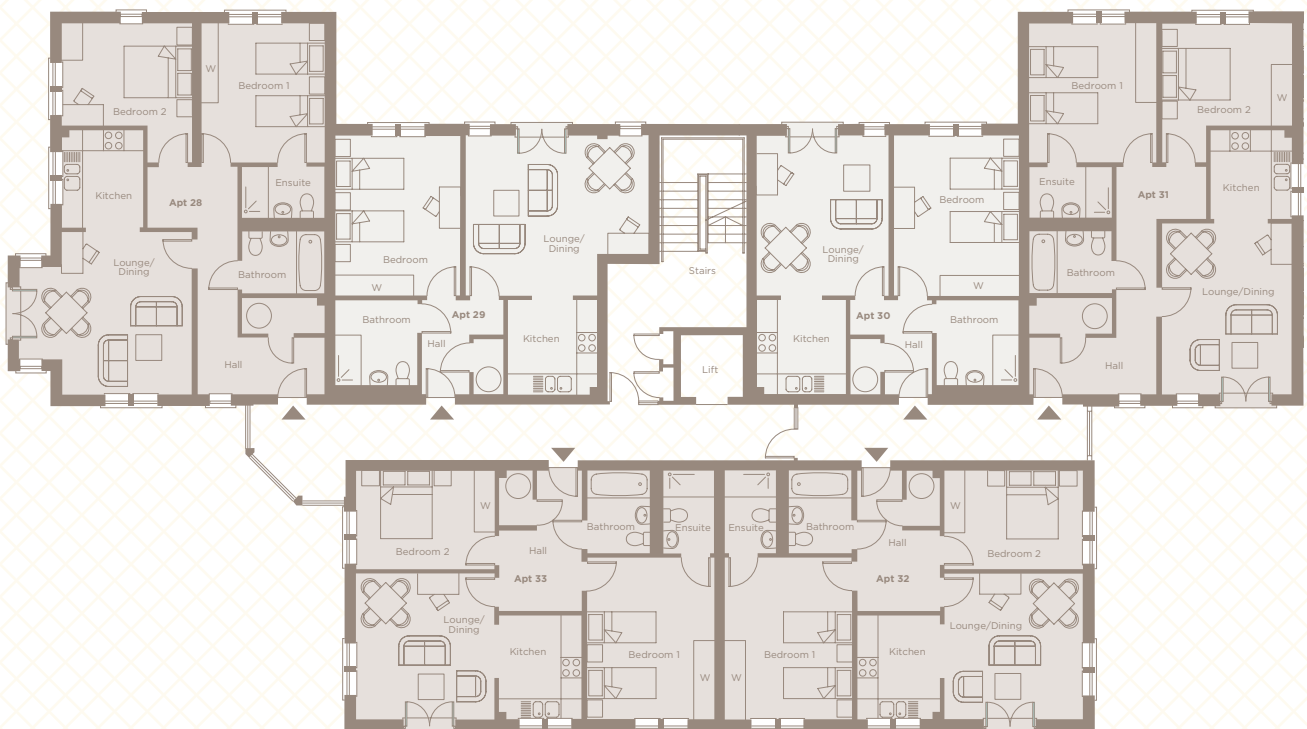
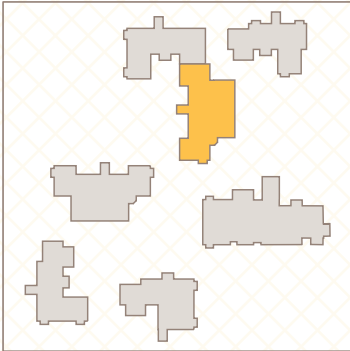


# TATTON

## First floor

ENTERPRISE  
RETIREMENT  
LIVING

BOUGHTON  
HALL



Whilst we try to be as accurate as possible, room dimensions are maximum and indicative. Layouts are not shown to scale and have been 'handed' in some cases for illustration purposes. Note: All ground floor apartments have patio doors. Plans include indicative furniture layouts and for the avoidance of doubt such furniture is not included within the specification.

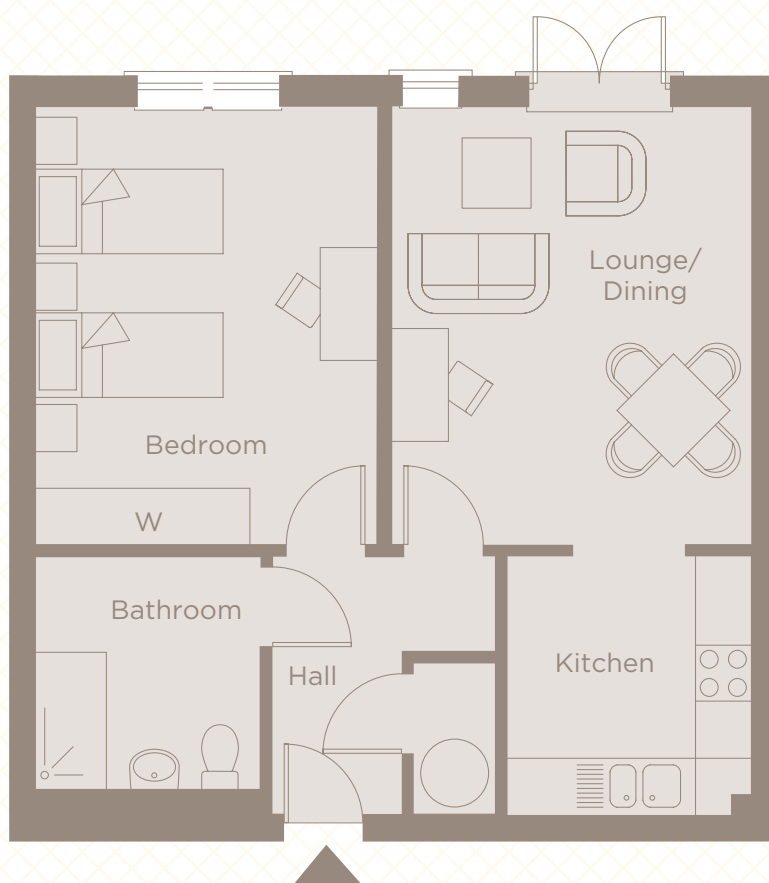
# TATTON

## Apartment 30 1 Bedroom, First Floor



ENTERPRISE  
RETIREMENT  
LIVING

BOUGHTON  
HALL



Kitchen	2.77m x 2.62m	9'1" x 8'7"
Lounge/dining	4.67m x 3.84m	15'4" x 12'8"
Bedroom 1	4.67m x 3.66m	15'4" x 12'0"
<b>Approx gross internal area</b>	<b>56.7 m<sup>2</sup></b>	<b>610 ft<sup>2</sup></b>

Whilst we try to be as accurate as possible, room dimensions are maximum and indicative. Layouts are not shown to scale and have been 'handed' in some cases for illustration purposes. Note: All ground floor apartments have patio doors. Plans include indicative furniture layouts and for the avoidance of doubt such furniture is not included within the specification.

# SITE PLAN

ENTERPRISE  
RETIREMENT  
LIVING

BOUGHTON  
HALL



Whilst we try to be as accurate as possible, room dimensions are maximum and indicative. Layouts are not shown to scale and have been 'handed' in some cases for illustration purposes. Note: All ground floor apartments have patio doors. Plans include indicative furniture layouts and for the avoidance of doubt such furniture is not included within the specification.