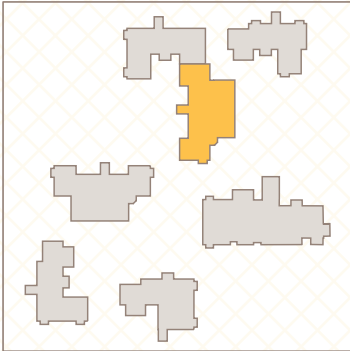


TATTON

First floor

ENTERPRISE
RETIREMENT
LIVING

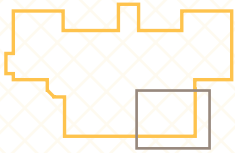
BOUGHTON
HALL



Whilst we try to be as accurate as possible, room dimensions are maximum and indicative. Layouts are not shown to scale and have been 'handed' in some cases for illustration purposes. Note: All ground floor apartments have patio doors. Plans include indicative furniture layouts and for the avoidance of doubt such furniture is not included within the specification.

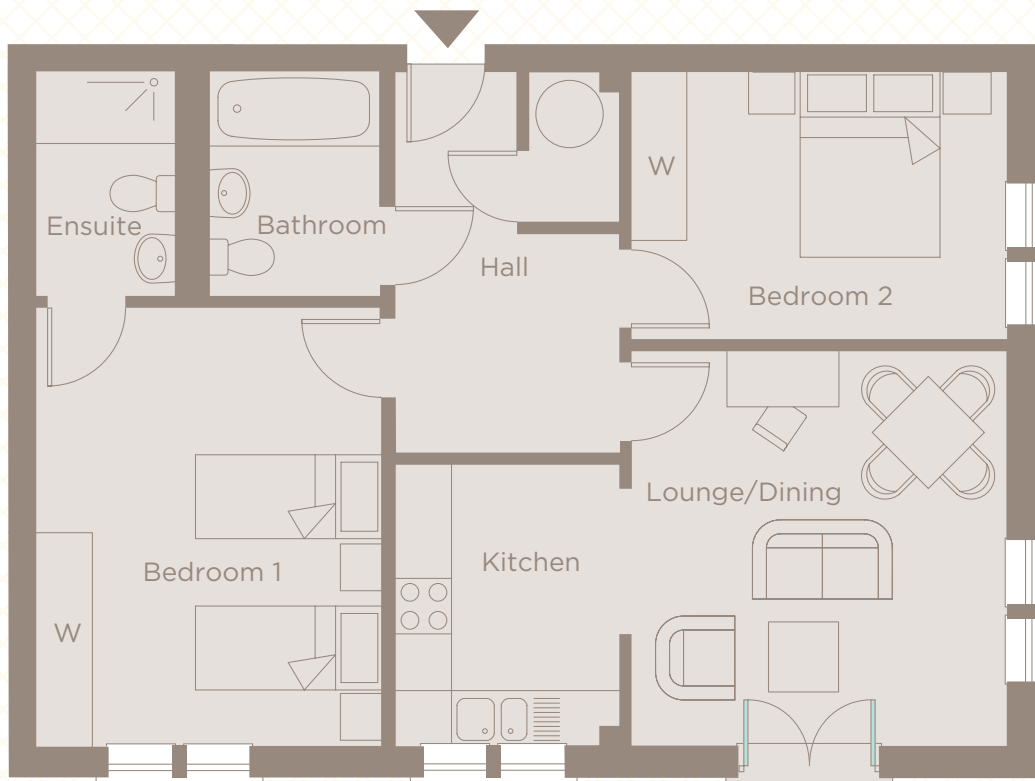
TATTON

Apartment 32 2 Bedroom, First floor



ENTERPRISE
RETIREMENT
LIVING

BOUGHTON
HALL



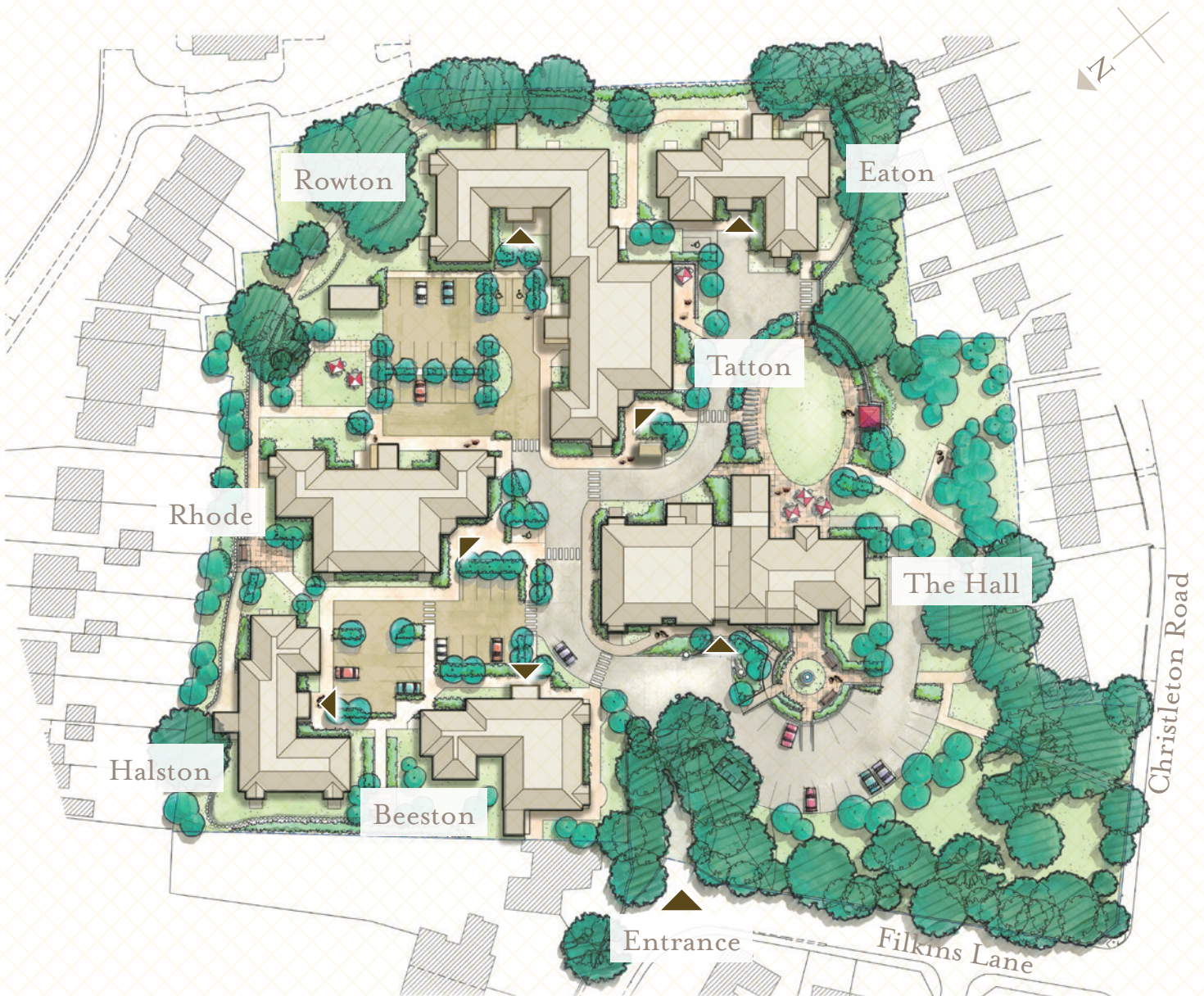
Kitchen	3.01m x 2.43m	9' 11" x 7' 12"
Lounge/Dining	4.26m x 4.06m	13' 12" x 13' 4"
Bedroom 1	4.73m x 3.71m	15' 6" x 12' 2"
Bedroom 2	2.89m x 4.06m	9' 6" x 13' 4"
Approx gross internal area	73.4 m²	790 ft²

Whilst we try to be as accurate as possible, room dimensions are maximum and indicative. Layouts are not shown to scale and have been 'handed' in some cases for illustration purposes. Note: All ground floor apartments have patio doors. Plans include indicative furniture layouts and for the avoidance of doubt such furniture is not included within the specification.

SITE PLAN

ENTERPRISE
RETIREMENT
LIVING

BOUGHTON
HALL



Whilst we try to be as accurate as possible, room dimensions are maximum and indicative. Layouts are not shown to scale and have been 'handed' in some cases for illustration purposes. Note: All ground floor apartments have patio doors. Plans include indicative furniture layouts and for the avoidance of doubt such furniture is not included within the specification.