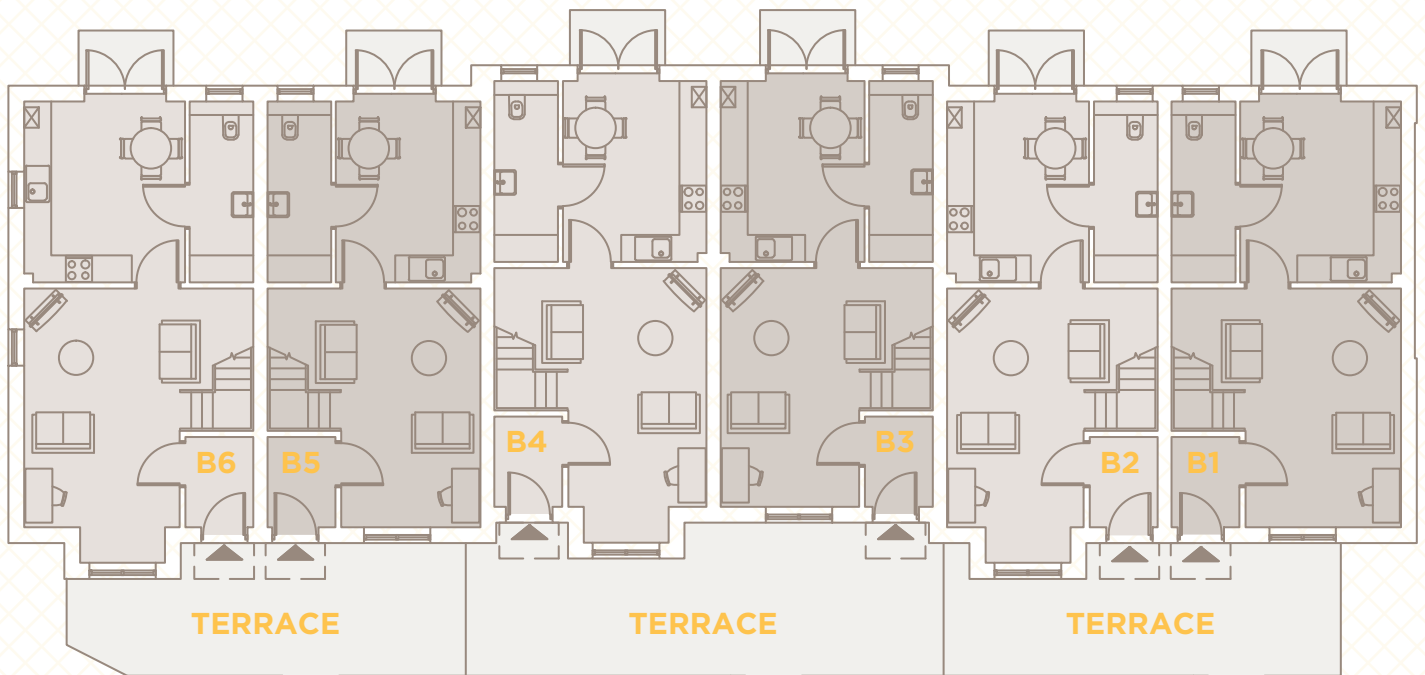
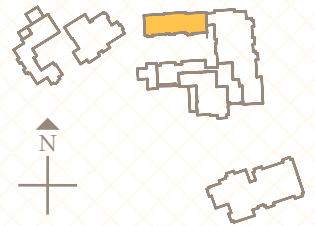


# RIEVAULX COTTAGES GROUND FLOOR

ENTERPRISE  
RETIREMENT  
LIVING

THE  
RED HOUSE

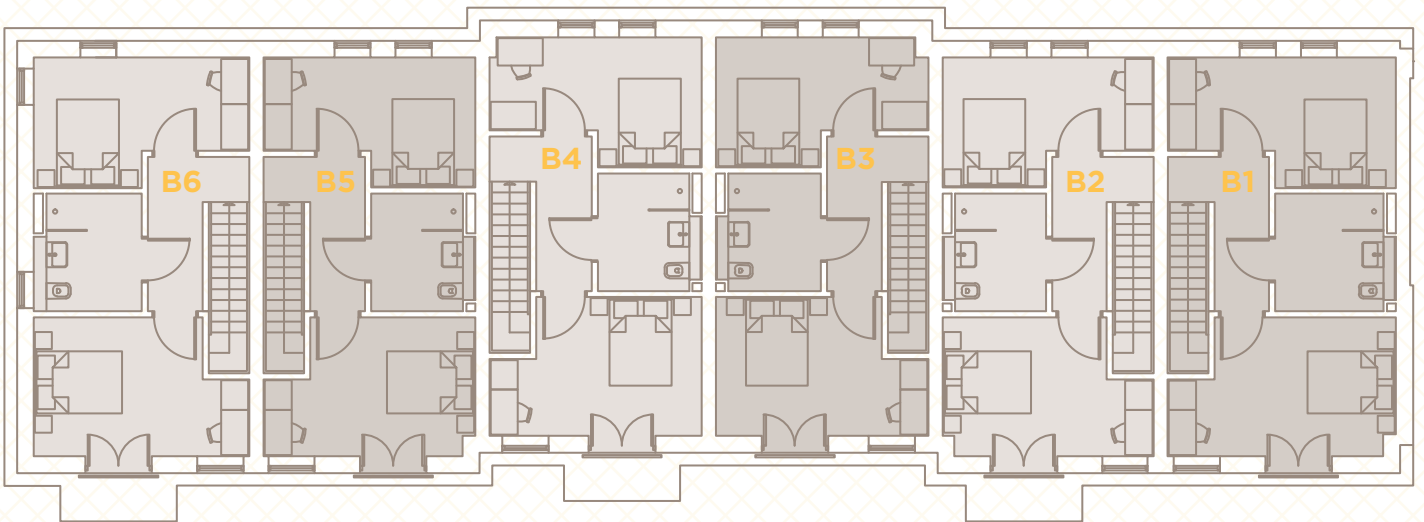
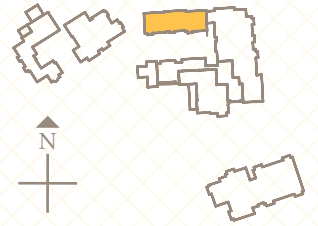


Plans are not shown to scale and room dimensions are approximate, given at their maximum and are indicative only. They are not intended to be used for carpet sizes, appliance sizes or items of furniture.

# RIEVAULX COTTAGES FIRST FLOOR

ENTERPRISE  
RETIREMENT  
LIVING

THE  
RED HOUSE



Plans are not shown to scale and room dimensions are approximate, given at their maximum and are indicative only. They are not intended to be used for carpet sizes, appliance sizes or items of furniture.

# RIEVAULX COTTAGES B6

Total Area - 92.0m<sup>2</sup> / 990ft<sup>2</sup>

## Lounge

5.27m x 3.43m / 17'4" x 11'3"

## Kitchen / Dining

4.00m x 3.55m / 13'1" x 11'8"

## WC / Utility

4.00m x 1.41m / 13'1" x 4'8"

## Bedroom 1

4.76m x 3.06m / 15'8" x 10'1"

## Bedroom 2

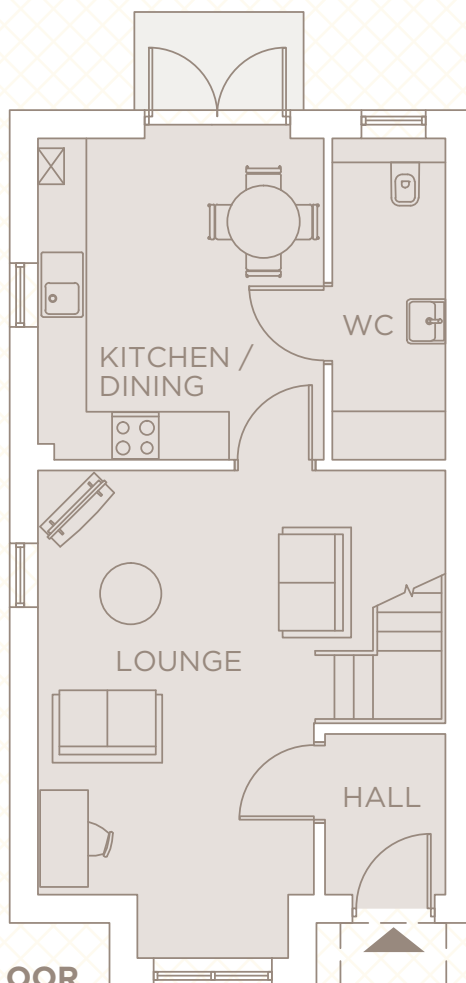
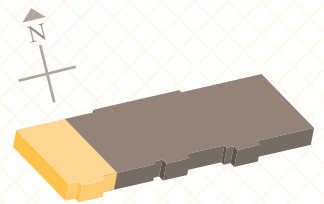
4.76m x 2.88m / 15'8" x 9'6"

## Shower Room

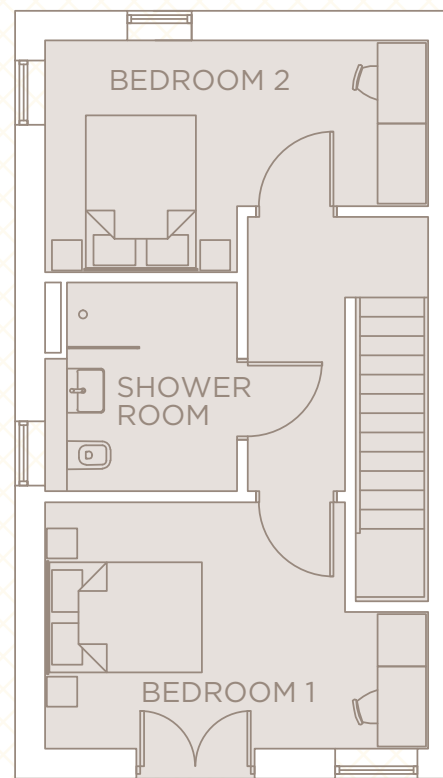
2.60m x 2.11m / 7'6" x 6'11"

ENTERPRISE  
RETIREMENT  
LIVING

THE  
RED HOUSE



GROUND FLOOR



FIRST FLOOR

Plans are not shown to scale and room dimensions are approximate, given at their maximum and are indicative only. They are not intended to be used for carpet sizes, appliance sizes or items of furniture.