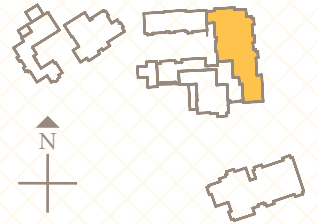
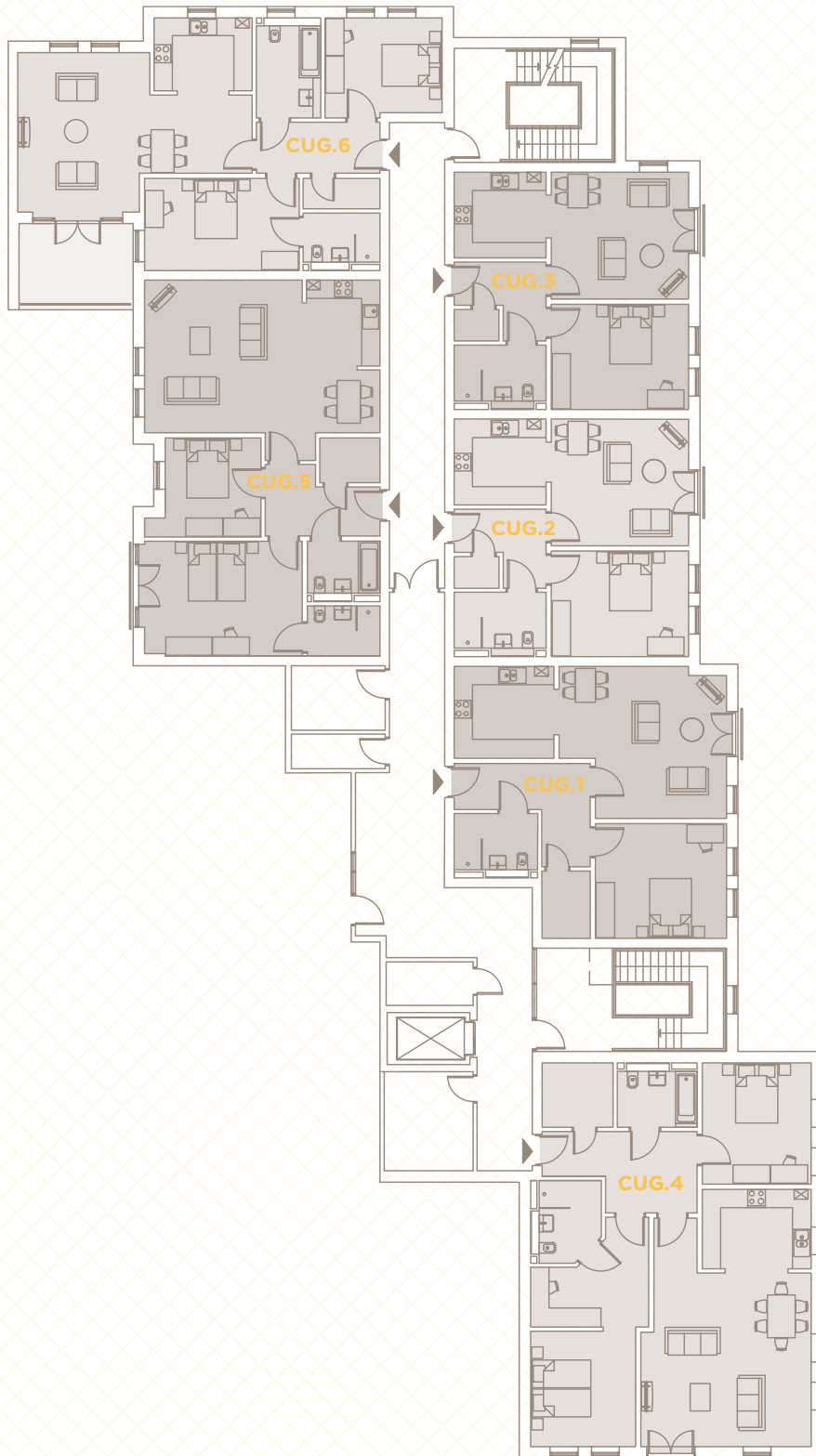


ROSEDALE UPPER GROUND FLOOR

ENTERPRISE
RETIREMENT
LIVING

THE
RED HOUSE



Plans are not shown to scale and room dimensions are approximate, given at their maximum and are indicative only. They are not intended to be used for carpet sizes, appliance sizes or items of furniture.

ROSEDALE CUG.5

Total Area - 92.3m² / 993ft²

Lounge / Dining

7.68m x 4.98m / 25'2" x 16'4"

Kitchen

2.80m x 2.40m / 9'2" x 7'10"

Bedroom 1

5.11m x 3.75m / 16'9" x 12'4"

Bedroom 1 Ensuite Shower

2.40m x 1.64m / 7'10" x 5'4"

Bedroom 2

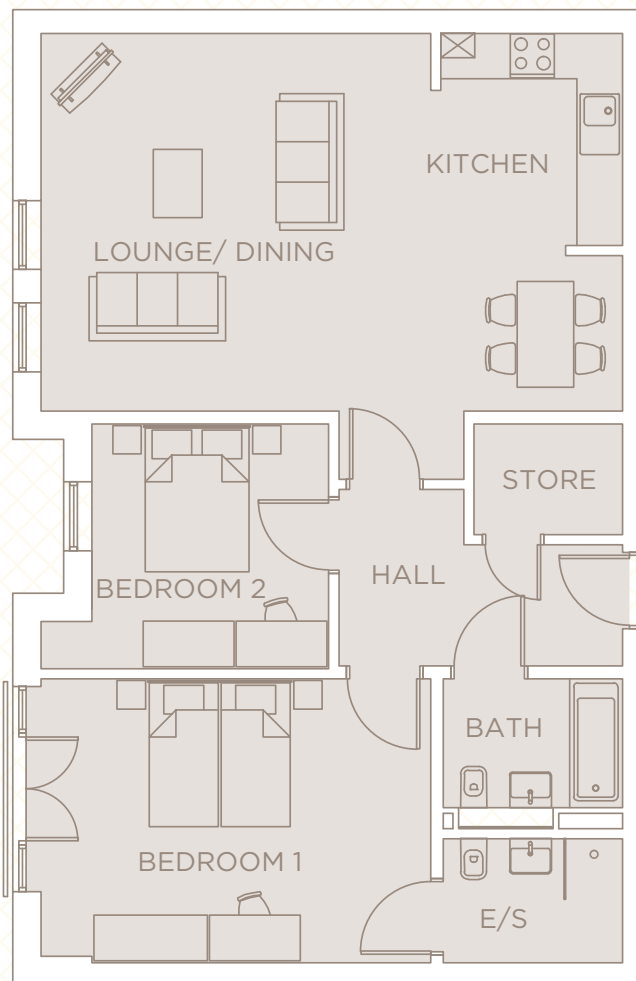
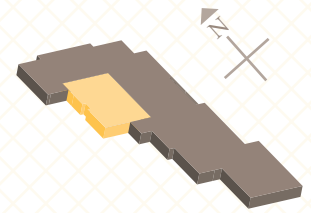
3.23m x 3.12m / 10'7" x 10'3"

Bathroom

2.40m x 1.70m / 7'10" x 5'7"

ENTERPRISE
RETIREMENT
LIVING

THE
RED HOUSE



UPPER GROUND FLOOR

Plans are not shown to scale and room dimensions are approximate, given at their maximum and are indicative only. They are not intended to be used for carpet sizes, appliance sizes or items of furniture.