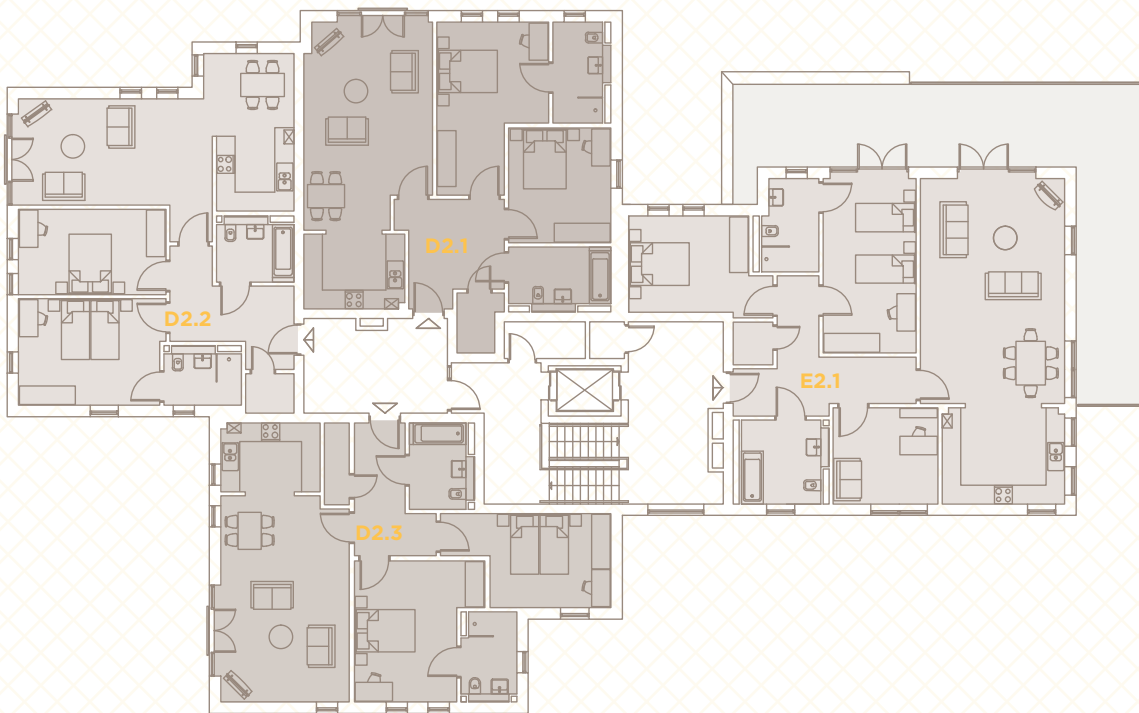
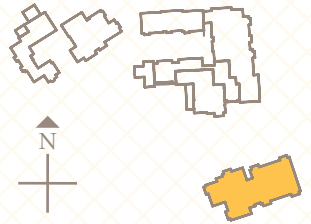


RICHMOND SECOND FLOOR

ENTERPRISE
RETIREMENT
LIVING

THE
RED HOUSE



Plans are not shown to scale and room dimensions are approximate, given at their maximum and are indicative only. They are not intended to be used for carpet sizes, appliance sizes or items of furniture.

RICHMOND E2.1

Total Area - 121.2m² / 1305ft²

Lounge / Dining

7.25m x 4.65m / 23'9" x 15'3"

Kitchen

3.95m x 3.10m / 13'0" x 10'2"

Study

3.39m x 3.10m / 11'1" x 10'2"

Bedroom 1

5.62m x 3.00m / 18'5" x 9'10"

Bedroom 1 Ensuite Shower

3.00m x 1.85m / 9'10" x 6'1"

Bedroom 2

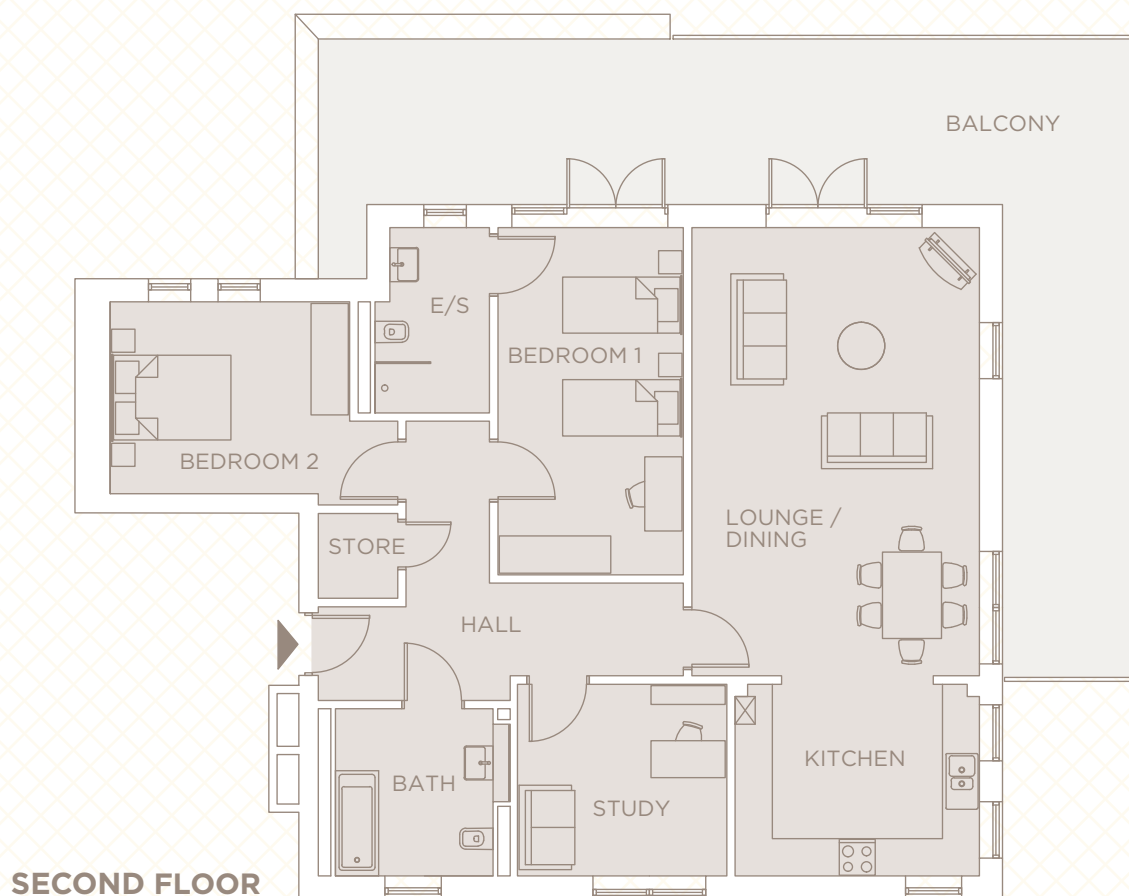
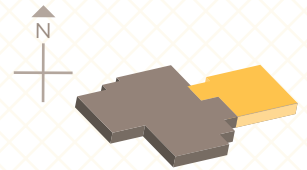
3.88m x 3.10m / 12'9" x 10'2"

Bathroom

2.70m x 2.55m / 8'10" x 8'4"

ENTERPRISE
RETIREMENT
LIVING

THE
RED HOUSE



Plans are not shown to scale and room dimensions are approximate, given at their maximum and are indicative only. They are not intended to be used for carpet sizes, appliance sizes or items of furniture.