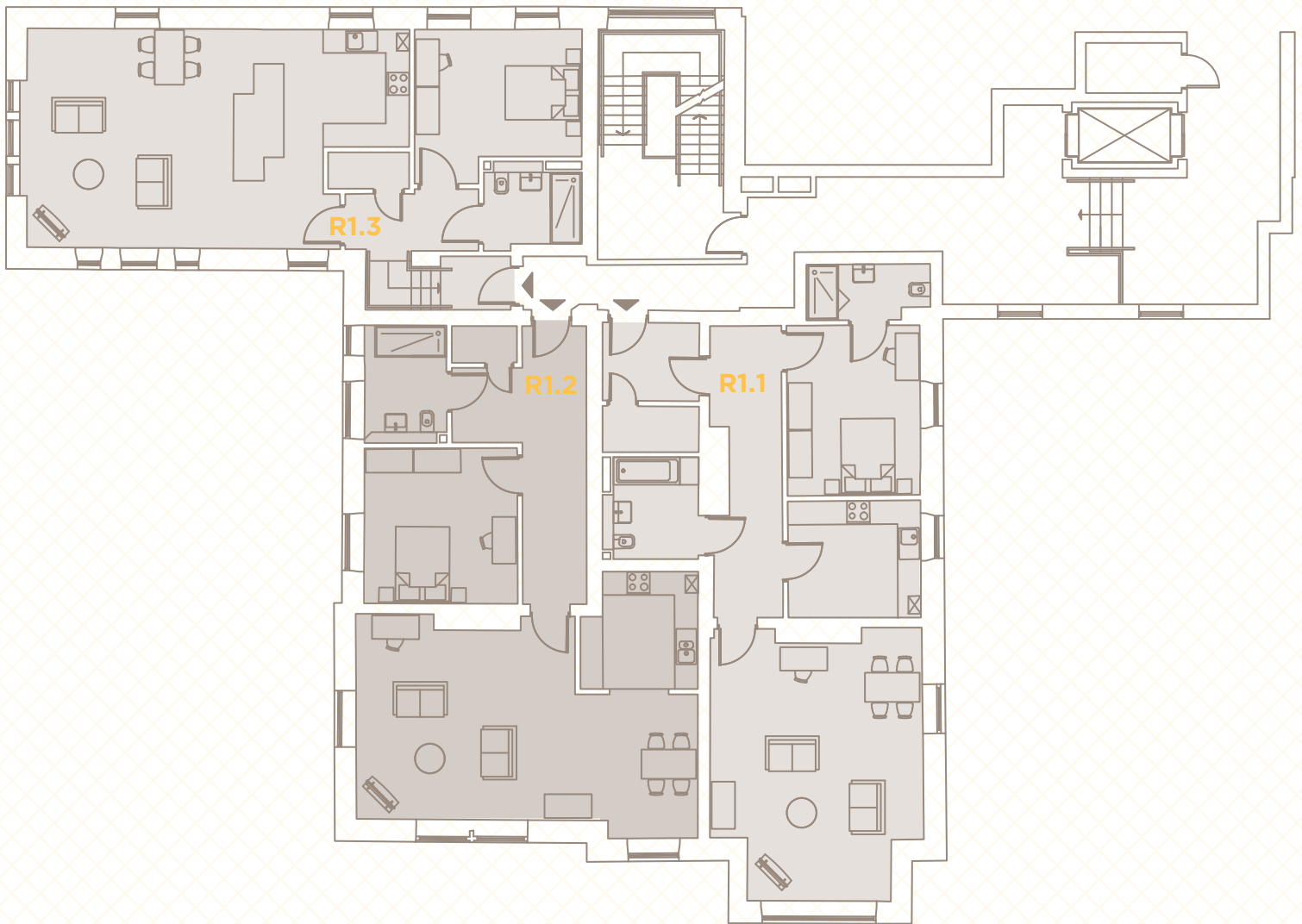
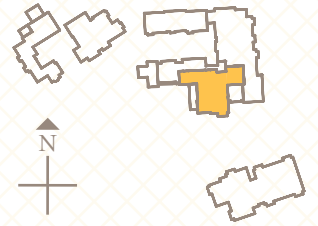


# RED HOUSE FIRST FLOOR

ENTERPRISE  
RETIREMENT  
LIVING

THE  
RED HOUSE



Plans are not shown to scale and room dimensions are approximate, given at their maximum and are indicative only. They are not intended to be used for carpet sizes, appliance sizes or items of furniture.

# RED HOUSE R1.1

Total Area - 97.8m<sup>2</sup> / 1053ft<sup>2</sup>

## Lounge / Dining

6.58m x 5.41m / 21'7" x 17'9"

## Kitchen

3.39m x 2.96m / 11'2" x 9'9"

## Bedroom

4.34m x 3.40m / 14'1" x 10'5"

## Bedroom Ensuite Shower

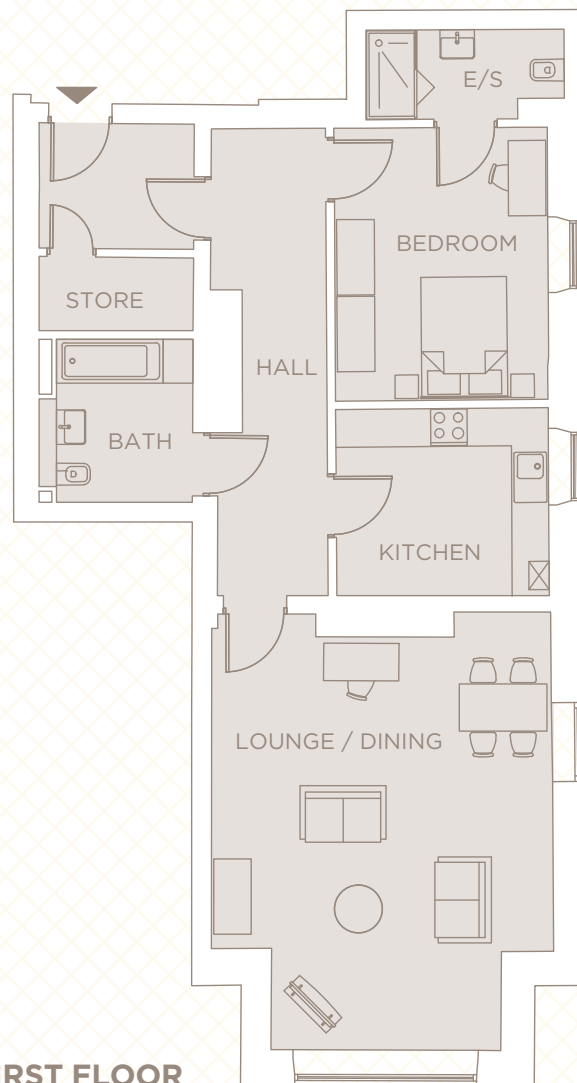
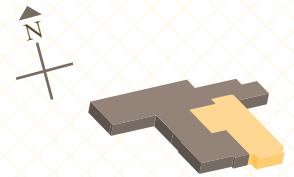
3.16m x 1.42m / 11'6" x 4'8"

## Bathroom

2.60m x 2.17m / 8'6" x 7'2"

ENTERPRISE  
RETIREMENT  
LIVING

THE  
RED HOUSE



Plans are not shown to scale and room dimensions are approximate, given at their maximum and are indicative only. They are not intended to be used for carpet sizes, appliance sizes or items of furniture.