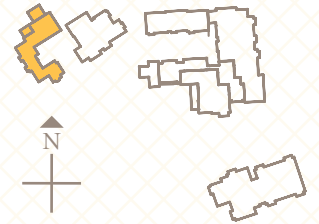
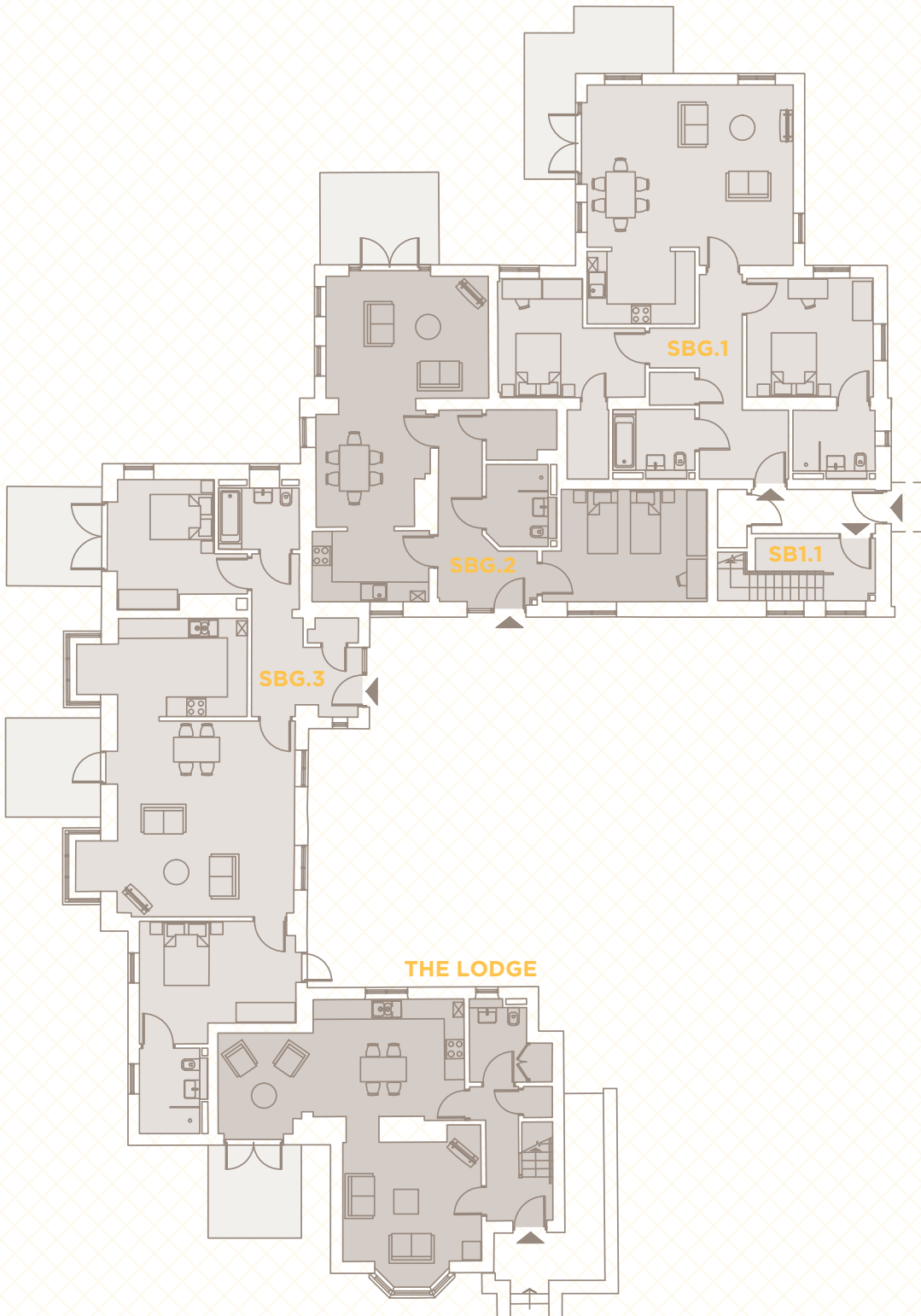


THE STABLES GROUND FLOOR

ENTERPRISE
RETIREMENT
LIVING

THE
RED HOUSE

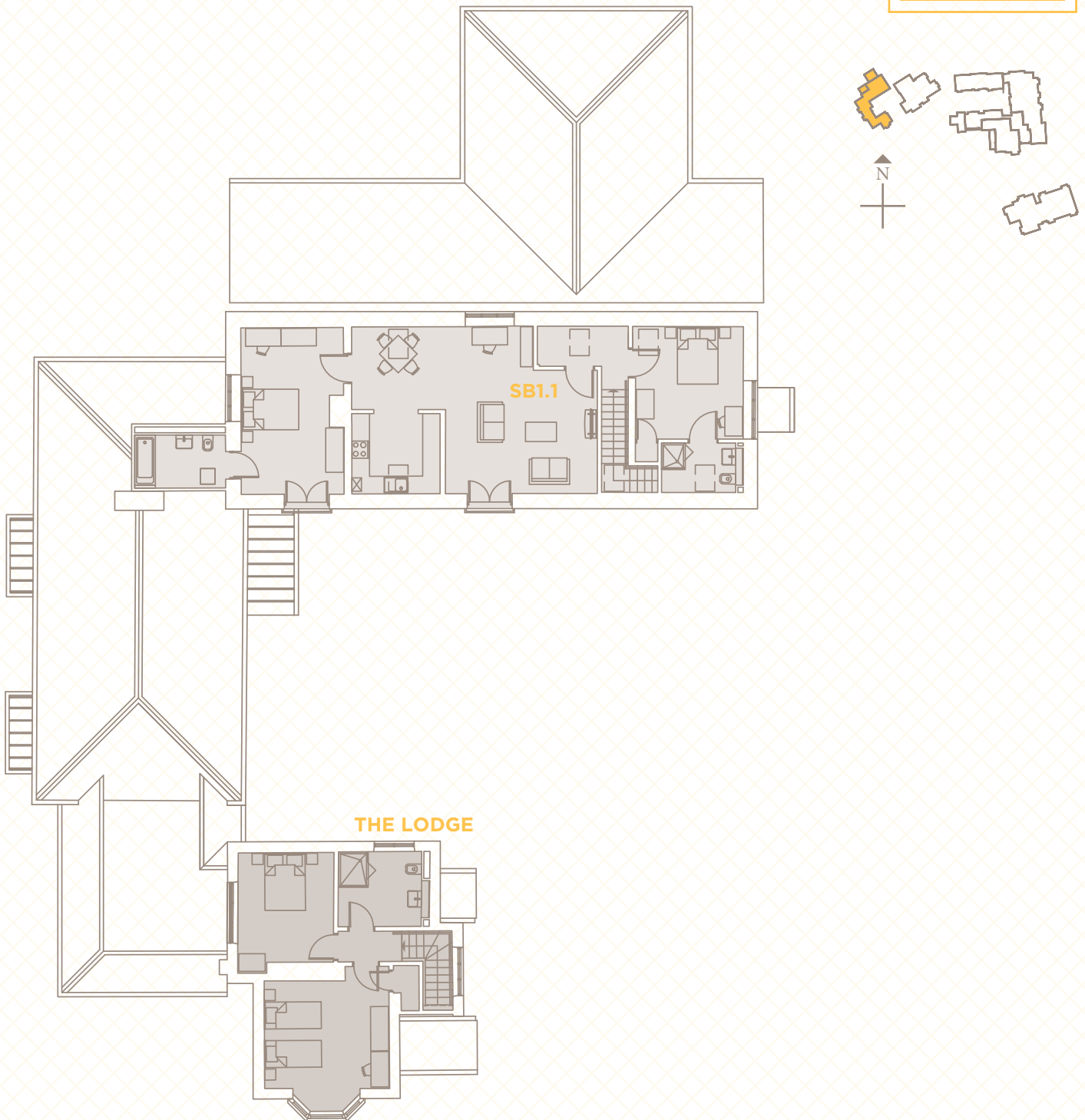


Plans are not shown to scale and room dimensions are approximate, given at their maximum and are indicative only. They are not intended to be used for carpet sizes, appliance sizes or items of furniture.

THE STABLES FIRST FLOOR

ENTERPRISE
RETIREMENT
LIVING

THE
RED HOUSE



Plans are not shown to scale and room dimensions are approximate, given at their maximum and are indicative only. They are not intended to be used for carpet sizes, appliance sizes or items of furniture.

STABLES SB1.1

Total Area - 103.4m² / 1113ft²

Lounge

5.67m x 5.14m / 18'7" x 16'10"

Dining

3.17m x 2.80m / 10'5" x 9'2"

Kitchen

3.00m x 2.72m / 9'10" x 8'11"

Bedroom 1

5.64m x 3.47m / 14'9" x 14'5"

Bedroom 1 Ensuite Bathroom

3.08m x 1.79m / 10'1" x 5'11"

Bedroom 2

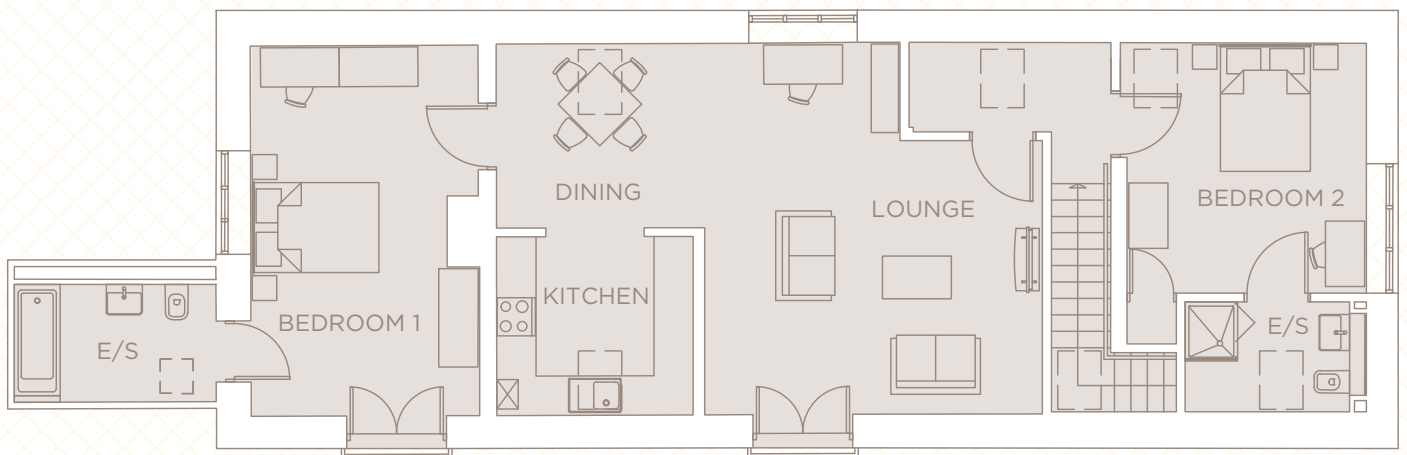
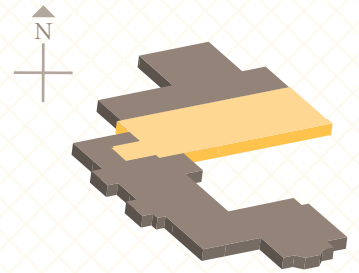
3.80m x 3.75m / 12'6" x 12'4"

Bedroom 2 Ensuite Shower

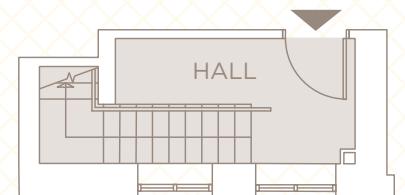
2.50m x 1.67m / 8'2" x 5'6"

ENTERPRISE
RETIREMENT
LIVING

THE
RED HOUSE



FIRST FLOOR



GROUND FLOOR

Plans are not shown to scale and room dimensions are approximate, given at their maximum and are indicative only. They are not intended to be used for carpet sizes, appliance sizes or items of furniture.